

# EVO

Technical specifications available on request

- Optimal size
- Modern esthetics and design
- Incorporation of all regulatory constraints
- Easy to install and maintain

Recommended for :



Housing



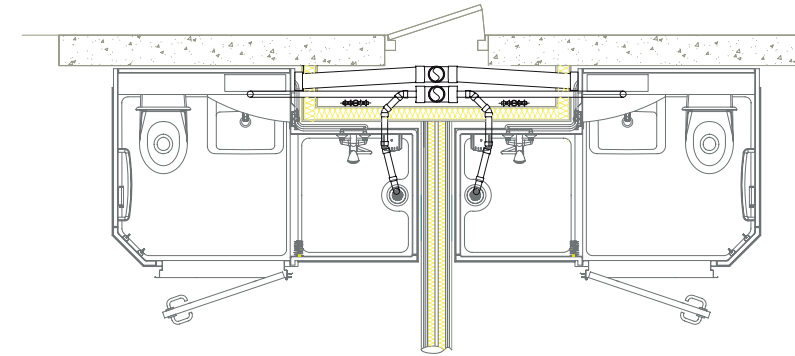
Hospitality

Model displayed with options

Version 17

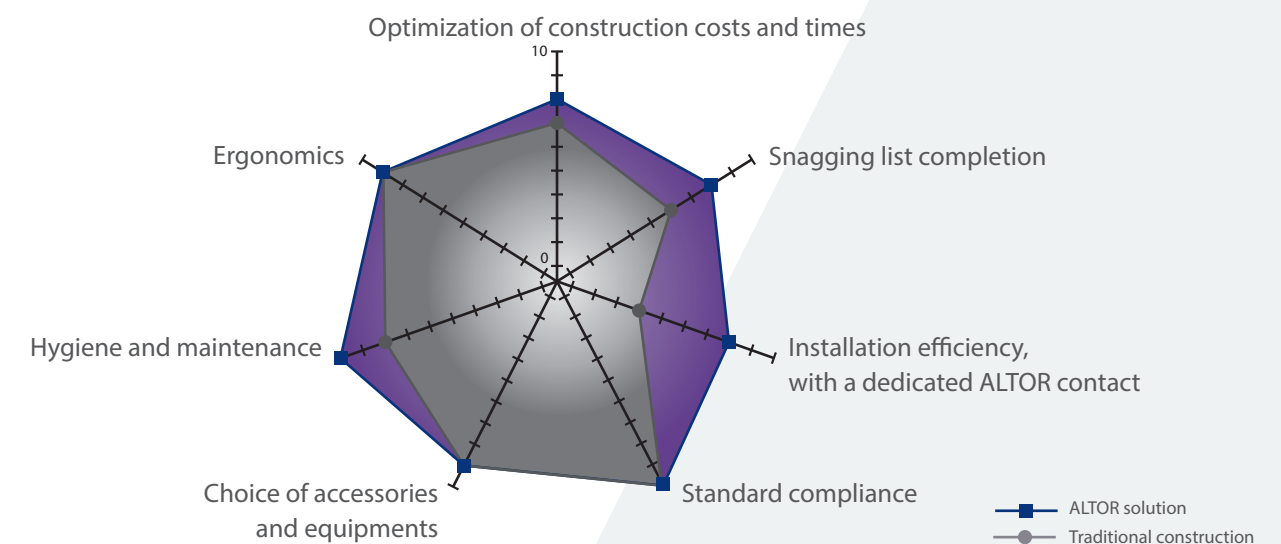


## Principle of connection



Principle of connection, here represented on Tradiline model, based on a single vertical outlet.

## Cost and time optimization with ALTOR



## Complete support on all of your projects



Supporting our sales representative, a technical contact will help you to adjust your bathroom on your plans and define your plumbing interfaces and casings.

Technical support may be provided, for monitoring.

A customer service team is available to answer any questions regarding the product warranties and to handle any malfunctions that may arise.



Head office: Parc industriel de Tabari - BP 79417 - 44194 Clisson CEDEX - France  
Tél. +33 (0) 2 40 36 16 67 - Fax +33 (0) 2 40 36 16 78  
altor@altor-industrie.com - [www.altor-industrie.com](http://www.altor-industrie.com)



# Description and color chart

## /// Prefabricated bathroom

**The fully equipped bathroom can be installed and connected in less than six hours. Because it is free-standing, the bathroom is not subject to the building's construction constraints. It is designed to make each function (shower space, toilet and wash basin) to be as user-friendly and functional as possible, while offering all of the available maintenance and upkeep features.**

### /// Regulation compliance

ALTOR's bathrooms are conform to applicable regulations and certifications.

### /// Structure

- The walls, floor and ceiling are fiberglass reinforced polyester, assembled with screws and bolts, with watertight joints made of closed-cell foam.
- Self-supporting floor with 20 mm entrance. Embossed non-slip floor.
- Surface finish: interior sanitary quality gelcoat with smooth finish and pattern, shower area, shower and wash basin mixers, rough outside ready to be clad.

### /// Fully equipped

- Wash basin, shower and wash basin mixers, mirror, shower bar and shower head, shower rail and curtain, hooks, and toilet paper holder.
- Aluzinc® white lacquered door frame (800 mm door width) + stainless steel threshold.
- Locking system.
- Stainless steel door handle.
- Fixed large mirror.
- Shelf.
- Spot lights 12V, standard 50W dichroic.
- Air extraction self adjusting valve.
- Water supply pipe insulated thickness 13 mm, with none-return valves and filters.

### /// Other configuration

- Available with a front door (toilet and wash basin are reversed).

### /// Easy to install

- Rough outer surface, ready for a plaster board covering (not included in the ALTOR's service).
- Design for either new constructions, or renovation projects.
- Project study monitoring by Altor team ( see terms and conditions).
- Access panel to connect water and electricity connexions.

### /// Maintenance and upkeep

- Easy to maintain due to an access trap to usual service shaft for plumbing, outlet and electricity connexions.

### /// Weight

Approximately 190 Kg.

### /// Options

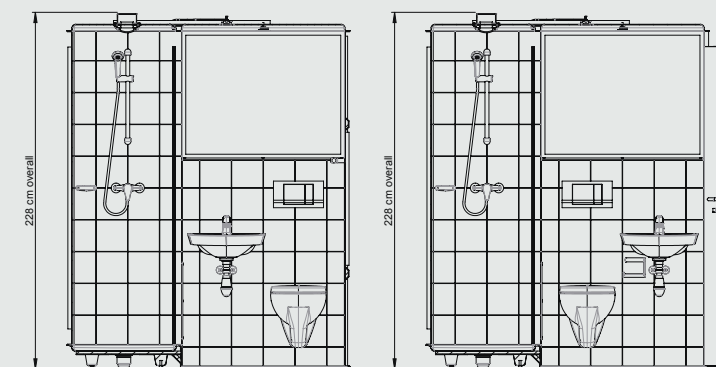
Main options listed in the table below.

#### OTHER OPTIONAL ACCESSORIES :

- Time flow or thermostatic wash basin or shower mixer
- Shelf in compact sandwich wenge
- Shower screen (without socket)
- Overlap laminated door
- Self-adjusting valve
- Shaving point
- Socket + shower screen (obligation)
- Closing cabinet above WC
- Extra clothes hook in nylon based on colour chart (referred to handling & colour)
- Other accessories on study

# Plans

## /// Elevation



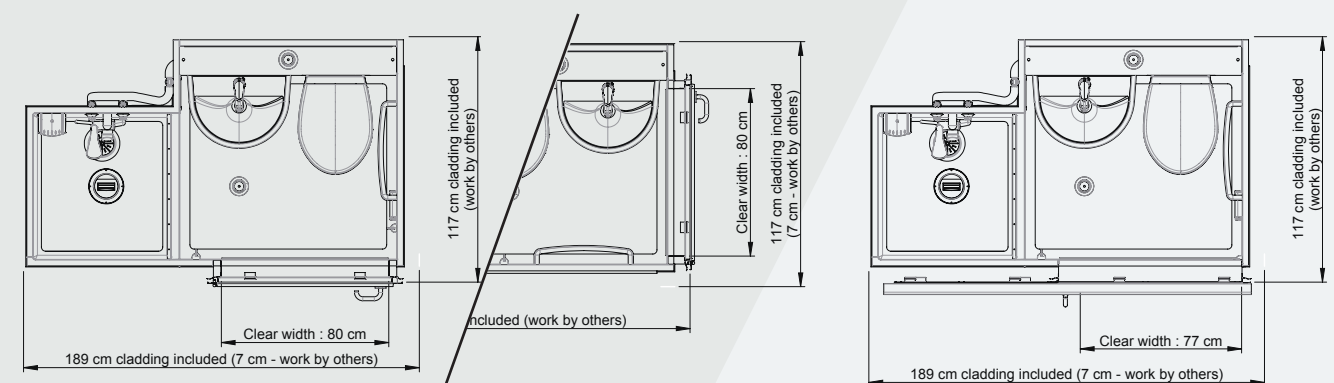
Configuration with side door

Configuration with front door



Bird's-eye view of the EVO model

## /// Footprint



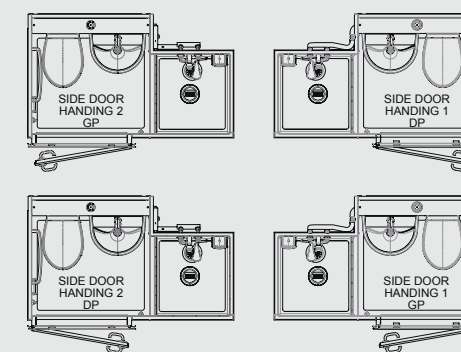
Configuration with side door

Configuration with front door

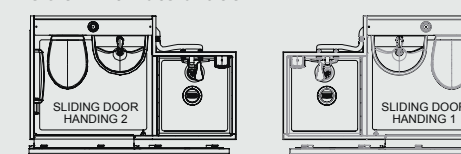
Configuration with sliding door

## /// Handings

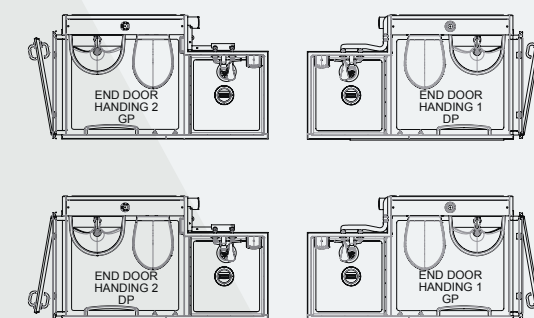
### Version with lateral door



### Version with lateral door

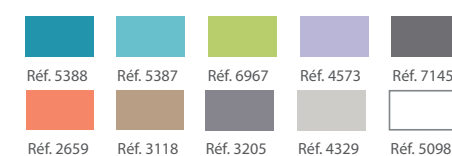


### Version with front door



## /// Colour charts examples

ALTOR's polyester color chart



## /// Sample finishing touches



Storage cabinet

Towel holder

Wall with tile effect

# Regulatory responses and certifications

