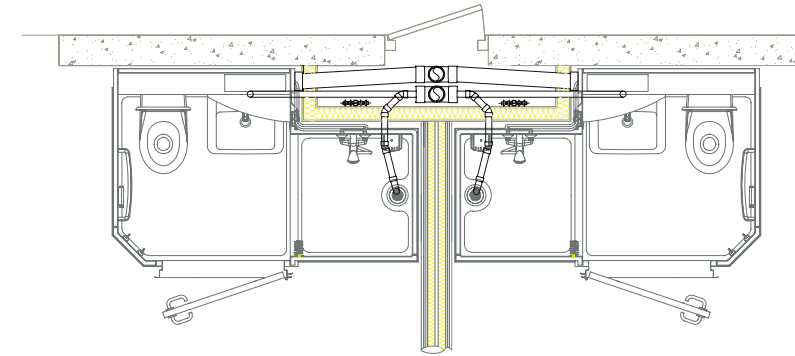


# CORUS 2

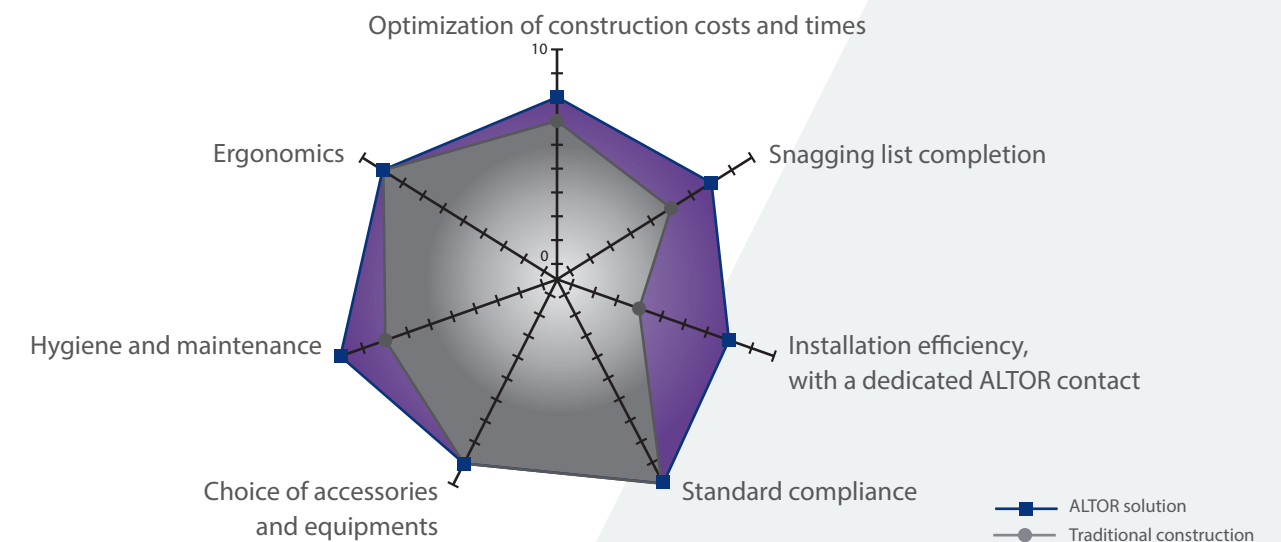
Technical specifications available on request

## Principle of connection



Principle of connection, here represented on Tradiline model, based on a single vertical outlet.

## Cost and time optimization with ALTOR



## Complete support on all of your projects



Supporting our sales representative, a technical contact will help you to adjust your bathroom on your plans and define your plumbing interfaces and casings.

Technical support may be provided, for monitoring.

A customer service team is available to answer any questions regarding the product warranties and to handle any malfunctions that may arise.



Head office: Parc industriel de Tabari - BP 79417 - 44194 Clisson CEDEX - France  
Tél. +33 (0) 2 40 36 16 67 - Fax +33 (0) 2 40 36 16 78  
altor@altor-industrie.com - [www.altor-industrie.com](http://www.altor-industrie.com)



Recommended for :



Housing

Model displayed with options

Version 17



# Description and color chart

## /// Prefabricated bathroom

**The fully equipped bathroom can be installed and connected in less than six hours. Because it is free-standing, the bathroom is not subject to the building's construction constraints. It is designed to make each function (shower space, toilet and wash basin) to be as user-friendly and functional as possible, while offering all of the available maintenance and upkeep features.**

### /// Regulation compliance

ALTOR's bathrooms are conform to applicable regulations and certifications.

### /// Structure

- The walls, floor and ceiling are fiberglass reinforced polyester, assembled with screws and bolts, with watertight joints made of closed-cell foam.
- Self-supporting floor with 20 mm entrance. Embossed non-slip floor.
- Surface finish: interior sanitary quality gelcoat with smooth finish and pattern, GRP tile effect, rough outside ready to be clad

### /// Fully equipped

- Wash basin, shower and wash basin mixers, mirror, shower bar and shower head, shower rail and curtain, hooks, and toilet paper holder.
- Aluzinc® white lacquered door frame (800 mm door width) + stainless steel threshold.
- Locking system.
- Stainless steel door handle.
- Fixed large mirror.
- Shelves.
- Light 1 spot light 12 V, standard 50 W dichroic.
- Air extraction self-adjusting valve.
- Water supply pipe insulated thickness 13 mm, with non-return valves and filters.

### /// Other configurations

- Available with a 600 mm door width and step entrance < 200 mm, for an horizontal shower outlet.

### /// Easy to install

- Access panel to connect water and electricity supply (under the washbasin, under the mirror shelf).
- Rough outer surface, ready for a plaster board covering (not included in the ALTOR's service).
- Design for either new constructions, or renovation projects.
- Project study monitoring by Altor team ( see terms and conditions).

### /// Maintenance and upkeep

- Easy to maintain due to an access trap to usual service shaft for plumbing, outlet and electricity connexions.

### /// Weight

Approximately 180 Kg.

### /// Options

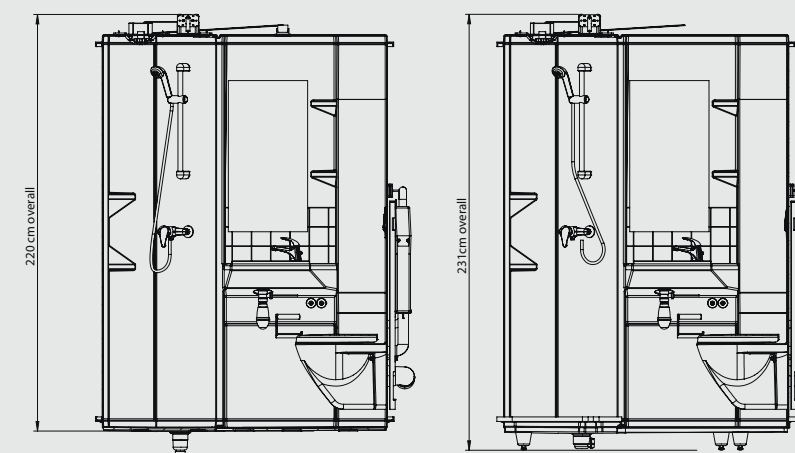
Main options listed in the table below.

#### OTHER OPTIONAL ACCESSORIES :

- Time flow or thermostatic wash basin or shower mixer
- Shelf in compact sandwich wenge or alder
- Shower screen
- Closing cabinet above WC
- Wall in color
- Resilient floor
- Electric or hot water towel breater
- Accessories in color according to color chart (including door handle)

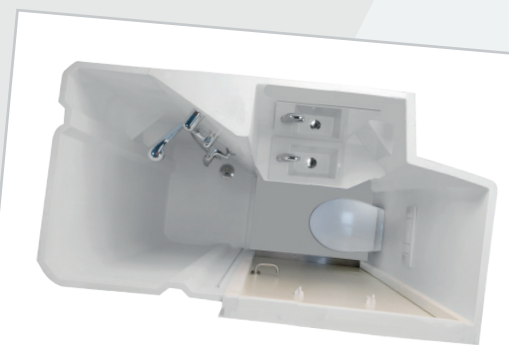
# Plans

## /// Elevation



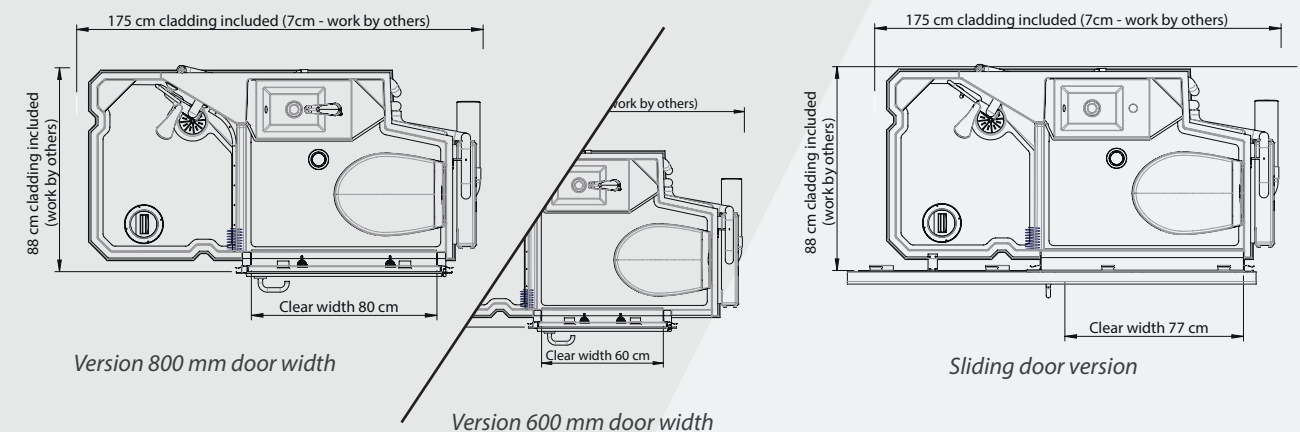
CORUS Elevation without step entrance  
(see our technical plans for détails)

CORUS Elevation step entrance < 200 mm  
(see our technical plans for détails)

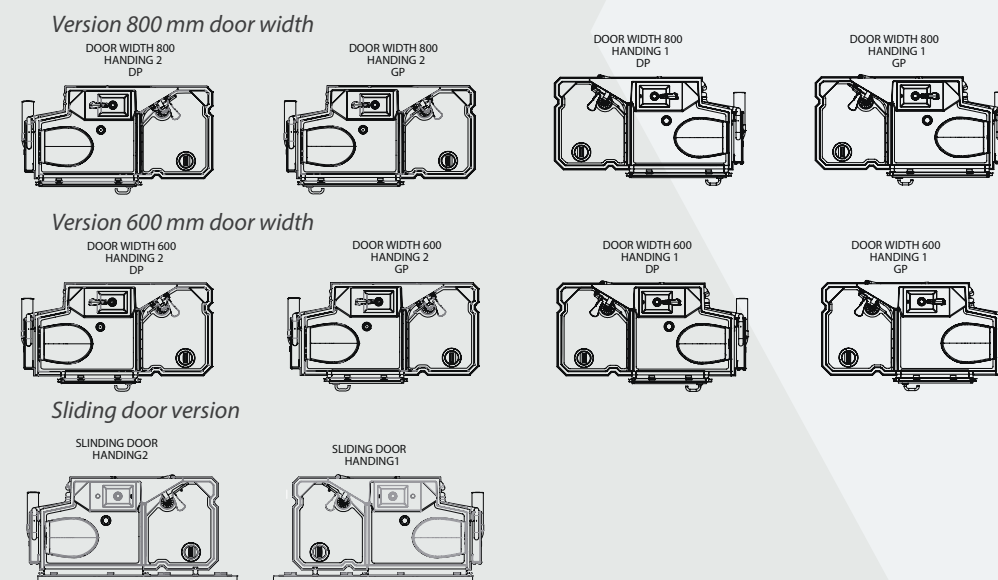


Bird's eye view of the CORUS model

## /// Footprint

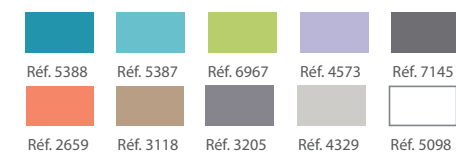


## /// Handings



## /// Colour charts examples

ALTOR's polyester color chart



Wash basin



Shower screen



Floor with wood aspect finishing

# Regulatory responses and certifications

