

ALEGA

Technical specifications available on request

- Optimal size
- Modern esthetics and design
- Incorporation of all regulatory constraints
- Accessibility for disabled persons
- Easy to install and maintain



Housing



Health



Hospitality

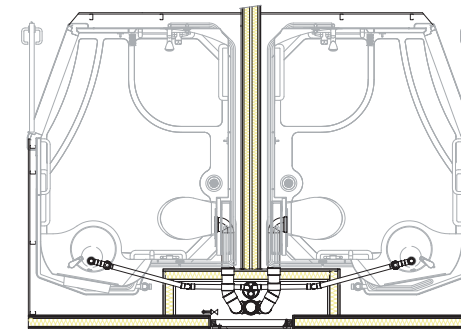
Recommended for :

Model displayed with options

Version 17

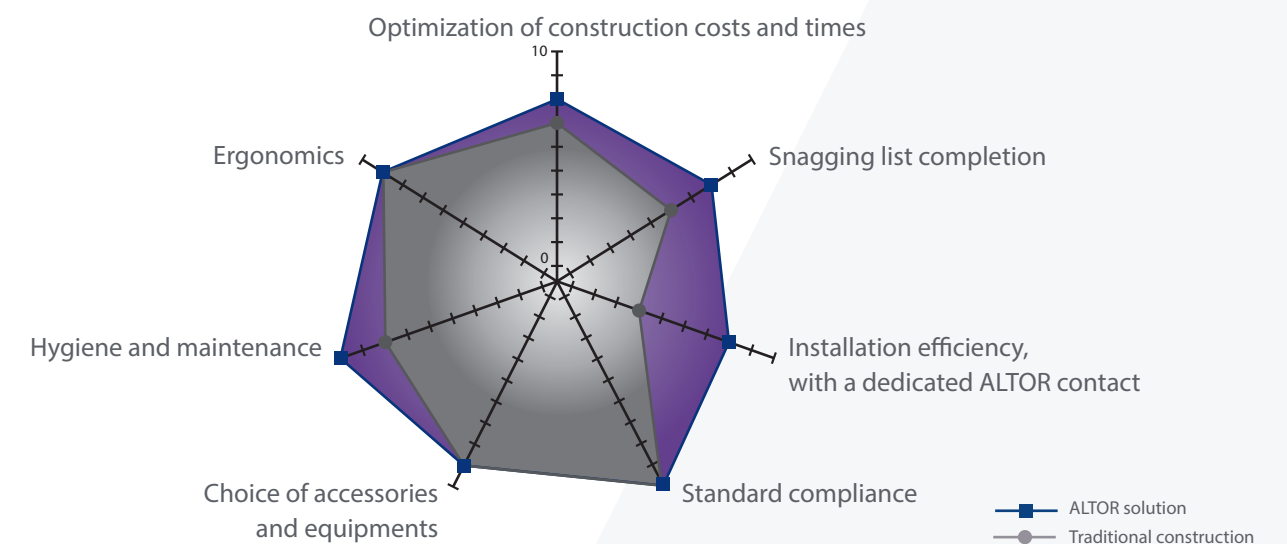


Principle of connection



Principle of connection,
here represented on Désirade 5 -
based on vertical outlet

Cost and time optimization with ALTOR



Complete support on all of your projects



Supporting our sales representative, a technical contact will help you to adjust your bathroom on your plans and define your plumbing interfaces and casings.

Technical support may be provided, for monitoring.

A customer service team is available to answer any questions regarding the product warranties and to handle any malfunctions that may arise.



Head office: Parc industriel de Tabari - BP 79417 - 44194 Clisson CEDEX - France
Tél. +33 (0) 2 40 36 16 67 - Fax +33 (0) 2 40 36 16 78
altor@altor-industrie.com - www.altor-industrie.com



Description and color chart

/// Prefabricated bathroom

The fully equipped bathroom can be installed and connected in less than six hours. Because it is free-standing, the bathroom is not subject to the building's construction constraints. It is designed to make each function (shower space, toilet and wash basin) to be as user-friendly and functional as possible, while offering all of the available maintenance and upkeep features.

/// Regulation compliance

ALTOR's bathrooms are conform to applicable regulations and certifications.

/// Structure

- The walls, floor and ceiling are fiberglass reinforced polyester, assembled with screws and bolts, with watertight joints made of closed-cell foam.
- The embossed non-slip floor, available in two versions:
 - for installation in a recess, with a plane acces on the finished flooring, or
 - for installation directly on the floor slab, with a conform doorway.

/// Fully equipped

- Wash basin, shower and wash basin mixers, mirror, shower bar and shower head, shower rail and curtain, hooks, and toilet paper holder.
- Toilet with overhead 3/6-liter tank, with dual-flush buttons.
- White varnished, swinging, rebated door, with a stainless steel handle.
- Spotligthing LED, compliant with standard NF 15-100, with grounded metal parts.
- Insulated water system, with filters and non return valves
- Air extractor grill.
- Only for accessible pods:grab bar / lifting bar / wall-mounted seat.

/// Configuration

- Exists with swing or sliding door.

/// Easy to install

- Rough outer surface, ready for a plasterboard (not included in ALTOR's service).
- Designed for either new constructions or renovation projects.
- Project study monitoring, (see the terms and conditions).

/// Maintenance and upkeep

Easy to maintain due to an access trap to usual service shaft, ceiling access to the spotlight.

/// Weight

Approximately 250 Kg.

/// Options

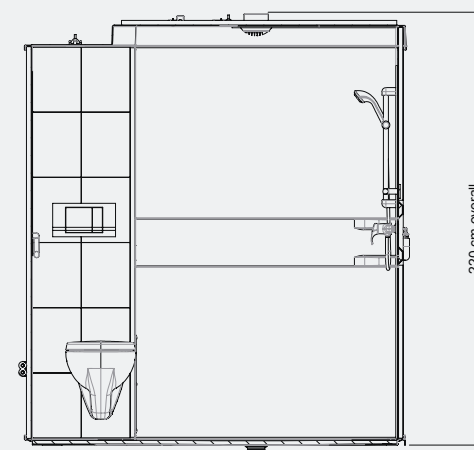
Main options listed in the table below.

OTHER OPTIONAL ACCESSORIES :

- In colour accessories
- Nurse call
- Folding or removable shower seat
- Adjustable bar for toilet
- 90° bar for toilet and shower
- Time flow or thermostatic mixers
- Storage niche or cabinet above the toilet
- Resilient floor FORBO
- Power outlet
- Any other accessory on study

Plans

/// Elevation



Lateral door version
(see our technical plans for details)

/// Sample finishing touches



Storage recess Wash basin Storage cabinet Resilient floor

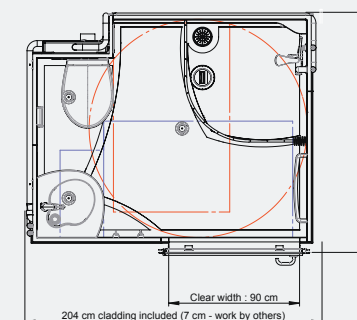
/// Footprint

- Compliant with accessibility criteria for persons with disabilities
- Turning circle
- Transfer areas
- Under-wash basin height and footprint as per regulations

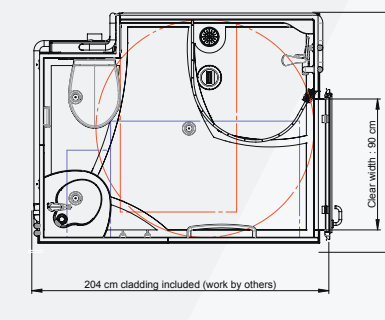


Bird's eye view of the ALEGA model

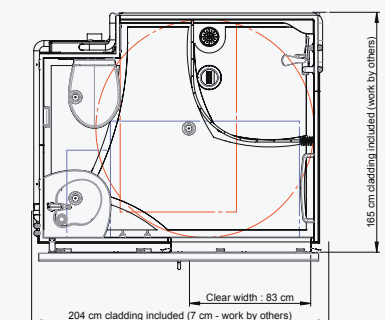
Swing door version



Front door version



Sliding door version



/// Colour charts examples

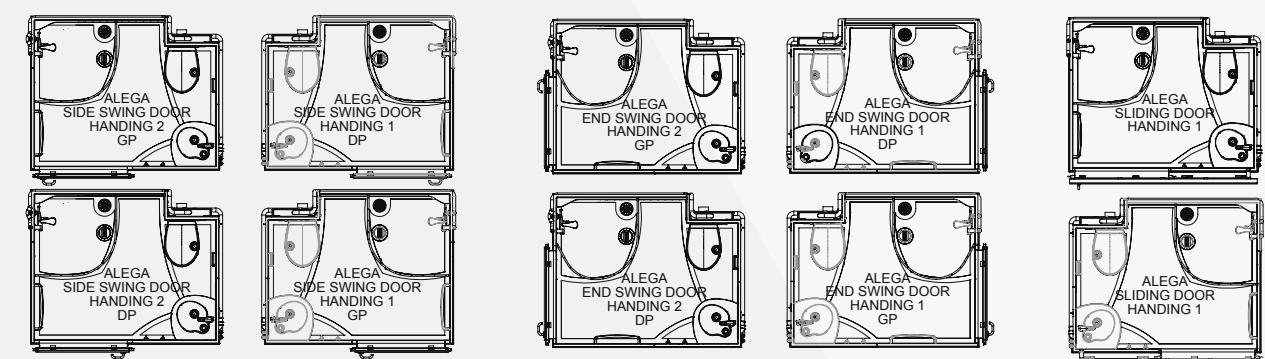
ALTOR's polyester color chart



Regulatory responses and certifications



/// Handings



Lateral swing door version

Front swing door version

Sliding door version